


# DESKTOP ENGRAVER EGX-350

| Specifications               |   |                      |   |
|------------------------------|---|----------------------|---|
| Table size                   | 305 (W) x 230 (D) mm [12 (W) x 9.1 (D) in.]   | Power consumption    | 122 W   |
| XYZ-axis travels             | 305 (X) x 230 (Y) x 40 (Z) mm [12 (X) x 9.1 (Y) x 1.6 (Z) in.]  | Acoustic noise level | During operation: 60 dB (A) or less (when not cutting),<br>During standby: 40 dB(A) or less (as specified by ISO 7779)  |
| XYZ-axis drive system        | Stepping motor, 3-axis simultaneous control   | Dimensions           | 616 (W) x 591 (D) x 393 (H) mm [24.3 (W) x 23.3 (D) x 15.5 (H) in.]   |
| Operating speed              | X and Y axes: 0.1 to 60 mm/sec. (0.004 to 2.4 in./sec),<br>Z axis: 0.1 to 30 mm/sec. (0.004 to 1.2 in./sec)   | Weight               | 34 kg (75 lb.)  |
| Software resolution          | 0.01 mm/step or 0.025 mm/step (0.0004 in./step or 0.001 in./step)   | Environment          | Temperature: 5 to 40 C (41 to 104 F),<br>Humidity: 35 to 80 % (no condensation)<br>Ambient pollution degree: 3 (as specified by IEC 60664-1)  |
| Mechanical resolution        | X and Y axes: 0.0025 mm/step (0.0001 in./step),<br>Z axis: 0.00125 mm/step (0.0005 in./step)  | Accessories          | Power cord, depth regulator nose (nose unit), nose-unit retainer (retaining screw, spring), spare mounting screw (for the cutter holder), character cutter (diameter 3.175 mm), flat cutter (diameter 3.175 mm), wrench, solid collet (diameter 3.175 mm), solid collet (diameter 4.36 mm), hexagonal wrench, hexagonal screwdriver, handy panel, adhesive sheet, vacuum adapter for chip cleaning, Roland Software CD-ROM, Roland EngraveStudio™ CD-ROM, Roland Software Program Guide, Roland EngraveStudio™ Program Guide, and User's Manual |
| Spindle motor                | Brushless DC motor, maximum 50 W  |                      |   |
| Spindle speed                | 5,000 to 20,000 rpm   |                      |   |
| Tool chuck                   | Cutter holder, collet method  |                      |   |
| Loadable workpiece thickness | Maximum 40 mm (1.6 in.) or 38 mm (1.5 in.) when nose unit is used   |                      |   |
| Connectivity                 | USB (compliant with Universal Serial Bus Specification Revision 1.1) or serial (RS-232C-compliant)  |                      |   |
| Control command set          | RML-1   |                      |   |
| Power requirements           | AC 100 to 120 V 10%, 1.3 A, 50/60 Hz (overvoltage category II, IEC 60664-1); or AC 220 to 240 V 10%, 0.6 A, 50/60 Hz (overvoltage category II, IEC 60664-1) |                      |   |

| Roland EngraveStudio™ System Requirements |   |
|---|---|
| OS  | Windows® 8/8.1/10 (32/64-bit), Windows® 7 Ultimate / Professional (32/64 bit) |
| CPU                                       | Pentium® III, 1 GHz or faster recommended                                     |
| RAM                                       | 1GB or more recommended   |


## Options

**Center vise**




**ZV-23C**  
Loadable material using jig for nameplate: 152mm(X) x 148mm (Y), and 35mm (H)  
Loadable material using jig for either pen or tube: 90mm(X) x 146mm(Y), and Max 20mm thick

**T-slot table**



**ZTT-35**  
Table size: 292mm(X) x 220mm(Y)  
Dimensions: 355mm(W) x 230mm(D) x 40mm(H)

**Vacuum table**



**ZV-23A**  
Table size: 305mm(X) x 230mm(Y)  
Loads material up to 35mm thick. Requires installation of a vacuum pump before use.

| Item                                      | Model number                                       | Description   | Item  | Model number                         | Description  |
|---|--|---|---|--------------------------------------|--|
| Engraving cutters (for plastic)           | ZEC-A2013  | Cemented carbide dia. = 3.175 x 114 (L) x 0.127 (W) | Diamond engraving cutters   | ZDC-A2000                            | Diamond dia. = 3.175 x 127 (L)                                       |
|   | ZEC-A2025  | Cemented carbide dia. = 3.175 x 114 (L) x 0.254 (W) |   | ZDC-A4000                            | Diamond dia. = 4.36 x 178 (L), only operates with the ZC-E436 collet |
|   | ZEC-A2051  | Cemented carbide dia. = 3.175 x 114 (L) x 0.508 (W) | Square end-mill   | ZHS-100                              | High speed steel dia. = 1 3 (ℓ) x 6 (d) x 50 (L) x 2NT               |
|   | ZEC-A2076  | Cemented carbide dia. = 3.175 x 114 (L) x 0.762 (W) |   | ZHS-200                              | High speed steel dia. = 2 6 (ℓ) x 6 (d) x 50 (L) x 2NT               |
|   | ZEC-A4013  | Cemented carbide dia. = 4.36 x 165 (L) x 0.127 (W)  |   | ZHS-300                              | High speed steel dia. = 3 10 (ℓ) x 6 (d) x 50 (L) x 2NT              |
|   | ZEC-A4025  | Cemented carbide dia. = 4.36 x 165 (L) x 0.254 (W)  |   | ZHS-400                              | High speed steel dia. = 4 12 (ℓ) x 6 (d) x 50 (L) x 2NT              |
|   | ZEC-A4051  | Cemented carbide dia. = 4.36 x 165 (L) x 0.508 (W)  |   | ZHS-500                              | High speed steel dia. = 5 15 (ℓ) x 6 (d) x 55 (L) x 2NT              |
| ZEC-A4076                                 | Cemented carbide dia. = 4.36 x 165 (L) x 0.762 (W) | ZHS-600   | High speed steel dia. = 6 15 (ℓ) x 6 (d) x 55 (L) x 2NT   |                                      |  |
| Engraving cutters (for aluminum or brass) | ZEC-A2013-BAL                                      | Cemented carbide dia. = 3.175 x 114 (L) x 0.13 (W)  | Ball end-mill   | ZCB-150                              | Cemented carbide R1.5 25 (ℓ) x 2.4 (Lc) x 65 (L) x 6 (d) x 2NT       |
|   | ZEC-A2025-BAL                                      | Cemented carbide dia. = 3.175 x 114 (L) x 0.25 (W)  |   | ZCB-200                              | Cemented carbide R2 25 (ℓ) x 3.2 (Lc) x 70 (L) x 6 (d) x 2NT         |
|   | ZEC-A4013-BAL                                      | Cemented carbide dia. = 4.36 x 165 (L) x 0.13 (W)   |   | ZCB-300                              | Cemented carbide R3 30 (ℓ) x 4.8 (Lc) x 80 (L) x 6 (d) x 2NT         |
| Parallel engraving cutters (for plastic)  | ZEC-A4025-BAL                                      | Cemented carbide dia. = 4.36 x 165 (L) x 0.25 (W)   | dia. = flute diameter, R = flute radius, ℓ = flute length, Lc = blade length, L = overall length, d = shank diameter, NT = number of flute, unit = mm |                                      |  |
|   | ZEC-A2150  | Cemented carbide dia. = 3.175 x 114 (L) x 1.52 (W)  | Collets for end-mill  | ZC-23                                | Diameter 6 mm, 5 mm, 4 mm, and 3 mm collets: 1 pc. each              |
|   | ZEC-A2190  | Cemented carbide dia. = 3.175 x 114 (L) x 1.91 (W)  |   | ZC-23-3                              | Diameter 3 mm collet: 1 pc.  |
|   | ZEC-A2230  | Cemented carbide dia. = 3.175 x 114 (L) x 2.29 (W)  |   | ZC-23-4                              | Diameter 4 mm collet: 1 pc.  |
|   | ZEC-A2320  | Cemented carbide dia. = 3.175 x 114 (L) x 3.175 (W) |   | ZC-23-6                              | Diameter 6 mm collet: 1 pc.  |
|   | ZEC-A4150  | Cemented carbide dia. = 4.36 x 165 (L) x 1.52 (W)   |   | ZC-23-3175                           | Diameter 3.175 mm collet: 1 pc.                                      |
|   | ZEC-A4190  | Cemented carbide dia. = 4.36 x 165 (L) x 1.91 (W)   |   | ZC-23-6.35                           | Diameter 6.35 mm collet: 1 pc.                                       |
|   | ZEC-A4230  | Cemented carbide dia. = 4.36 x 165 (L) x 2.29 (W)   |   | ZC-E436                              | Diameter 4.36 mm collet: 1 pc.                                       |
|   | ZEC-A4320  | Cemented carbide dia. = 4.36 x 165 (L) x 3.175 (W)  |   | ZDN-200                              | Inner diameter 2 mm, outer diameter 4.2 mm, for engraving text       |
|   | ZEC-A4380  | Cemented carbide dia. = 4.36 x 165 (L) x 3.81 (W)   |   | ZS-35                                | Spindle unit   |
| ZEC-A4430                                 | Cemented carbide dia. = 4.36 x 165 (L) x 4.34 (W)  | AS-10   |   | Adhesive sheet for securing material |  |
| Quarter round cutters (for plastic)       | ZEC-A2013-QR                                       | Cemented carbide dia. = 3.175 x 114 (L) x 0.13 (W)  |   |                                      |  |
|   | ZEC-A2025-QR                                       | Cemented carbide dia. = 3.175 x 114 (L) x 0.25 (W)  |   |                                      |  |
|   | ZEC-A4013-QR                                       | Cemented carbide dia. = 4.36 x 165 (L) x 0.13 (W)   |   |                                      |  |
|   | ZEC-A4025-QR                                       | Cemented carbide dia. = 4.36 x 165 (L) x 0.25 (W)   |   |                                      |  |

Roland DG reserves the right to make changes in specifications, materials or accessories without notice. Actual output may vary. For optimum output quality, periodic maintenance to critical components may be required. Please contact your Roland DG dealer for details. No guarantee or warranty is implied other than expressly stated. Roland DG shall not be liable for any incidental or consequential damages, whether foreseeable or not, caused by defects in such products. Three-dimensional shapes may be protected under copyright. Reproduction or use of copyrighted material is governed by local, national, and international laws. Customers are responsible for observing all applicable laws and are liable for any infringement. All trademarks are the property of their respective owners. Roland DG Corporation has licensed the MMP technology from the TPL Group.





Beautifully engrave precision text and other fine details.



V-Carving mode produces sharp angles for three-dimensional lettering with a hand-crafted look.



# Build Your Business with High-Quality, On-Demand Engraving



Choose from a wide variety of engraving patterns for added texture.



Get high quality results every time — even on acrylic.



## A Complete Engraving Solution

With the new EGX-350 desktop engraver, you can easily expand your business by adding valuable personalized items to your product line. The EGX-350 quickly engraves a wide variety of materials right in your sign shop, engraving business or retail store. This highly versatile tool is remarkably easy to use and expertly engineered to produce sharp, precision text and graphics. A complete, compact solution, the EGX-350 comes with everything you need to get started. Bundled Roland EngraveStudio software offers advanced features including a new V-Carving mode which produces a hand-carved look, and a new engrave simulation function that saves time and materials by allowing you to preview your designs before engraving.

## Increase the Value of Your Products

With the EGX-350, you can create beautiful custom signs and nameplates for both indoor and outdoor display including storefront and directional signage. Turn ordinary gifts, awards, promotional items and padfolios or pens into treasured mementos by personalizing them with names, events or dates. You can even produce design templates for heat pressing rhinestones onto t-shirts, handbags and other apparel items. Select from a variety of supported materials including plastic, acrylic, aluminum, stainless steel, brass and wood. Unlike laser engravers, the EGX-350 preserves the original colors and textures of wood, brass and artificial marbles for a beautifully finished look.

## Easy to Use

The EGX-350 connects to your PC through a USB port and is extremely easy to setup and operate. An easy-navigation control panel is located away from the production area offering a clear view of the engraving table. The EGX-350 also features an automatic surface detector that automatically determines the height of the material (Z-zero) for quality engraving at a consistent depth.\*1 An adjustable flip cover opens in two positions allowing efficient access to the engraved product. The brushless DC motor is highly durable for long-lasting performance, and the vacuum adapter attaches easily to the spindle to ensure clean operation.

\*1 Automatic surface detector works with included Dr. Engrave software and may not be able to engrave some materials depending on their shape and/or design.

## High-Quality Results

The EGX-350 is precision-engineered for performance with quality parts that minimize excess movement and vibration from the device. As a result, the EGX-350 produces sharp, crisp text and graphics for reliable results time after time. New Roland EngraveStudio software delivers fine, craftsman-style workmanship for stunning engraved products that project hand-rendered beauty.

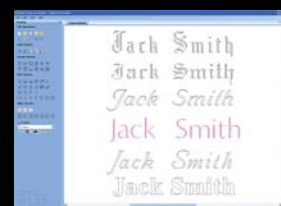


## Maximize Your Productivity with Roland EngraveStudio Software

### Roland EngraveStudio™

Roland EngraveStudio offers a variety of engraving depths that together produce a truly hand-carved look. Preview your designs on screen through the engraving simulation function that presents both the tool path and anticipated results prior to engraving. Import designs from Adobe Illustrator\*2 (ai and eps) and CorelDraw (eps)\*3 for precision text and graphics. Roland EngraveStudio is compatible with Windows® 8/8.1/10 (32/64 bit).

\*2 Before importing Adobe Illustrator data into Roland EngraveStudio, Roland recommends converting vector geometry and text to curves. For best results, switch off all patterns and/or color fills and save files in eps format. \*3 Supports ai (version 8.0), and eps (version 3.0) file formats.



Engrave text with a variety of fonts including TrueType or Single Line.

## DESKTOP ENGRAVER

# EGX-350

